

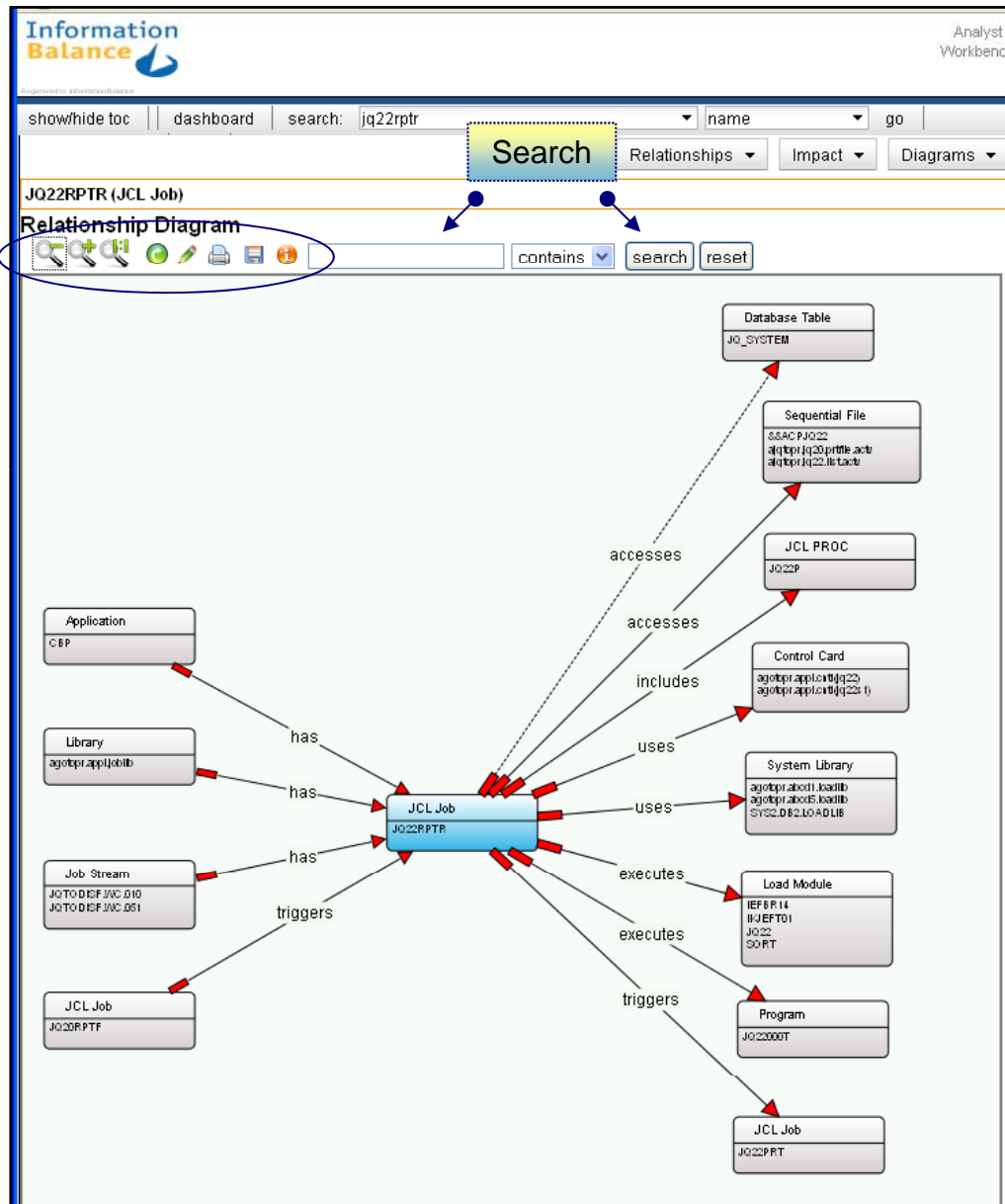
IB-ARM Version 4

Diagram Facility

Screen Captures

Information Balance, Inc.

August, 2012



- Zoom-out
- Zoom-in
- Zoom 1:1
- Reload
- Redraw
- Print
- Save
- More info

ARM's proprietary **Diagramming Facility** enables rich visualization of repository content. Internal component structures and component relationships are presented via easy to use and flexible diagrams. Users are provided with extensive viewing preferences. Diagrams can easily be tailored, searched, saved, printed or exported.

Information Balance

show/hide toc dashboard search: cs01001t name go advanced search print settings

CS01001T (Program)

Call Tree

Scrolling arrows - left/right/up/down

Center the diagram

JCL: CSCVCBMP PROC: CS01CP LOAD: CS01 PRG: CS01001T

JCL: CS80DBMP PROC: CS01P

PRG: CS80054T

PRG: CS80104T

PRG: CS90100T

PRG: CS90200T

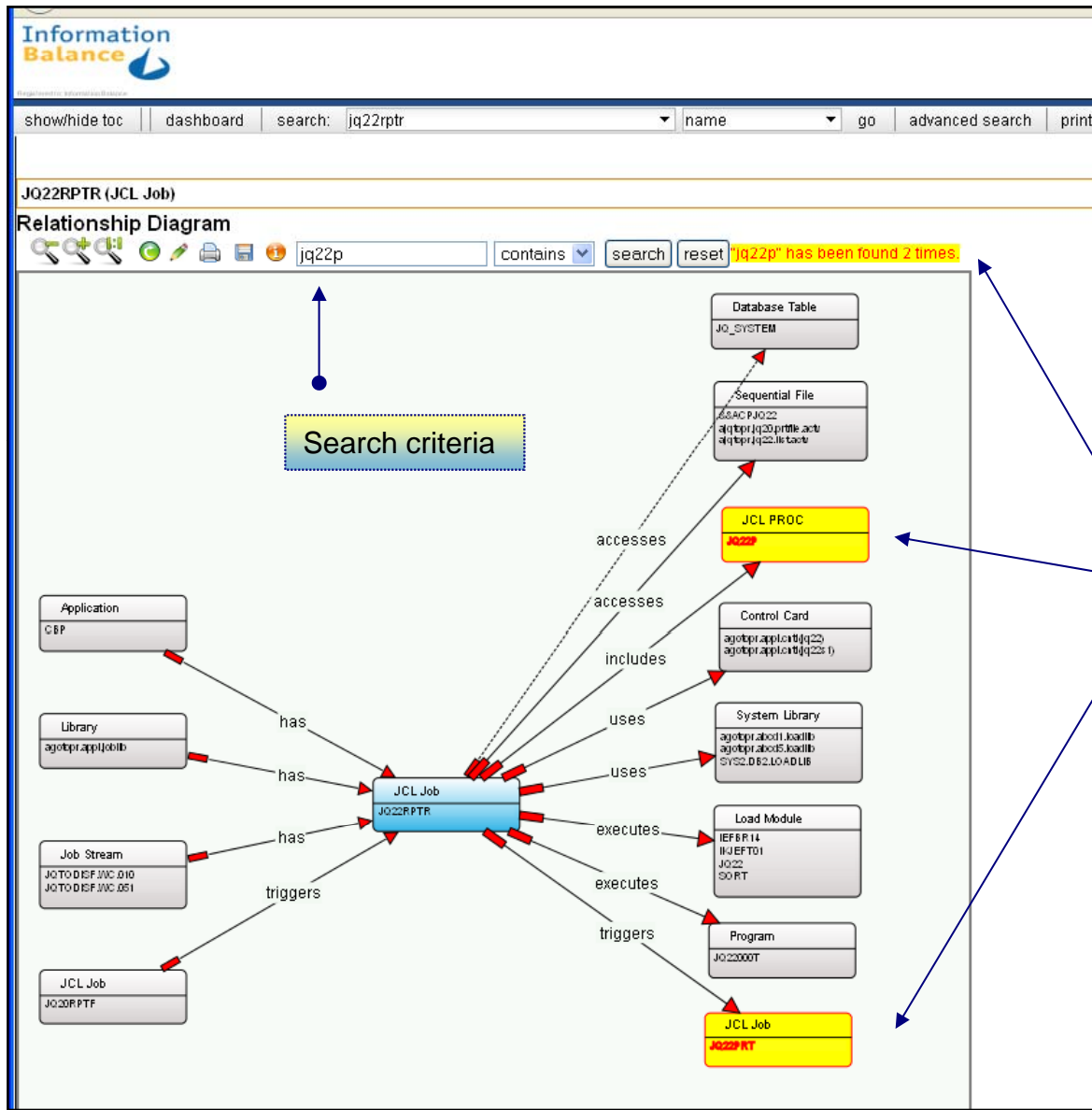
PRG: CS90600T

Extremely large diagrams are initially displayed with the selected object centered in the viewing window. Users can easily move around the diagram by scrolling left, right, up and down. The “center diagram” icon returns the display to the selected object.

The screenshot displays the 'Information Balance' web interface. At the top, there's a search bar with 'jq22rpvr' entered. Below it, the page title is 'JQ22RPTR (JCL Job)'. The main content area is titled 'Relationship Diagram' and shows a central node 'JCL Job JQ22RPTR' with several outgoing relationships: 'has' to 'Application CBP', 'Library agotopr.appl.joblib', and 'Job Stream JQTODISF.WC.010 JQTODISF.WC.051'; 'triggers' to 'Job Stream'; 'accesses' to 'Database Table JQ_SYSTEM' and 'JCL PROC JQ22P'; 'includes' to 'JCL PROC JQ22P'; 'uses' to 'Control Card agotopr.appl.ontl(jq22) agotopr.appl.ontl(jq22s)'; and 'executes' to 'System Library agotopr.abod1.loadlib agotopr.abod5.loadlib SYS2.DB2.LOADLIB'. A left-hand menu lists file formats for saving: SVG, PNG, JPG, GIF, TIFF, BMP, PSD, PICT, PDF, PS, EPS, and EMF. A dialog box is open in the foreground, titled 'Opening JQ22RPTR (JCL Job) [Relationship Diagram]. jpg', with the message 'You have chosen to open JQ22RPTR (JCL Job) [Relationship Diagram].jpg which is a: JPEG Image (141 KB) from: http://ibarm06'. It offers options to 'Open with' (with a 'Browse...' button) or 'Save File', and a checkbox for 'Do this automatically for files like this from now on.' with 'OK' and 'Cancel' buttons.

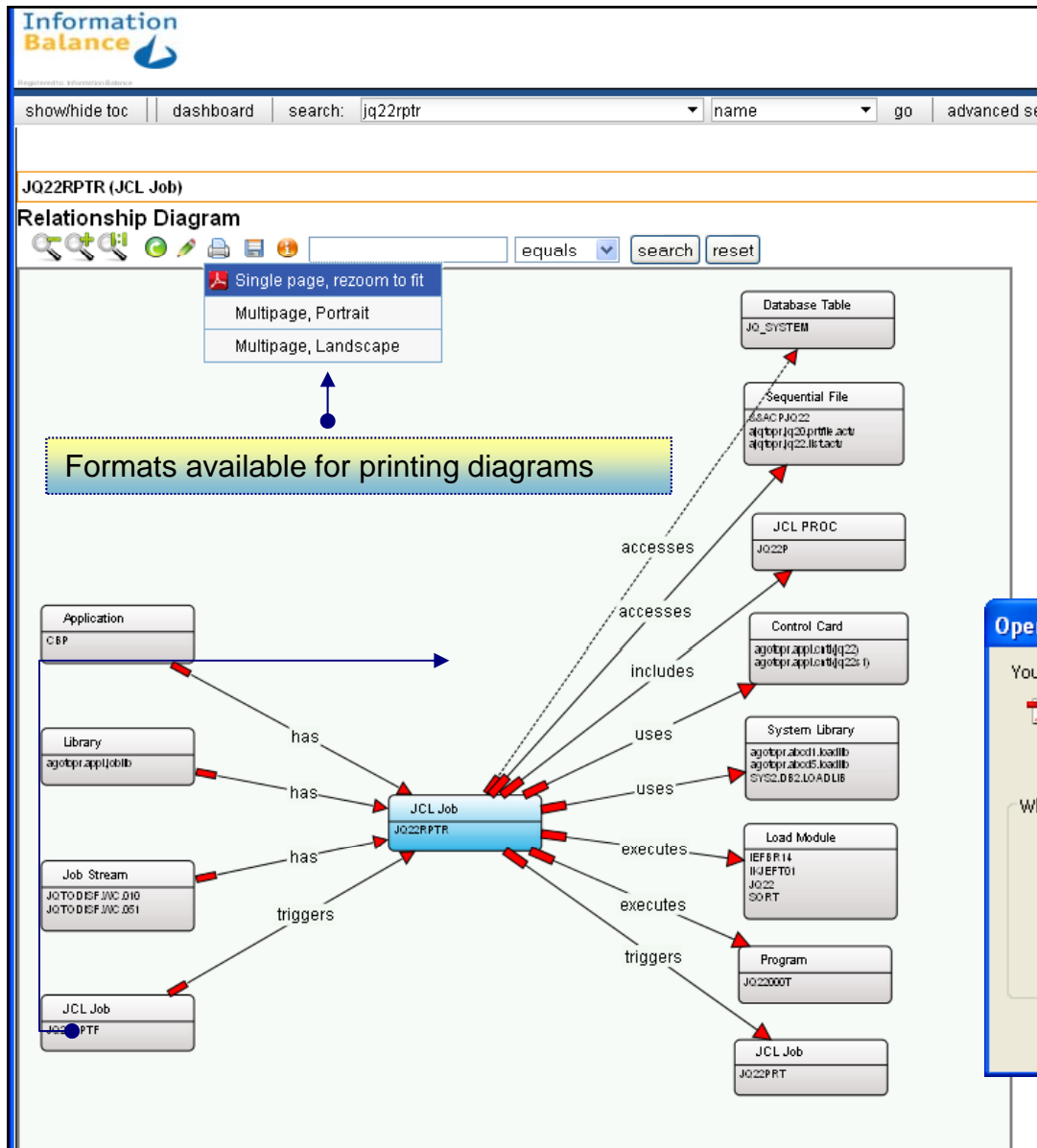
Diagrams can be saved in any of the popular file formats for graphics. When the format is chosen a dialog box opens to allow the user to view or save the file.

Formats available for saving diagrams

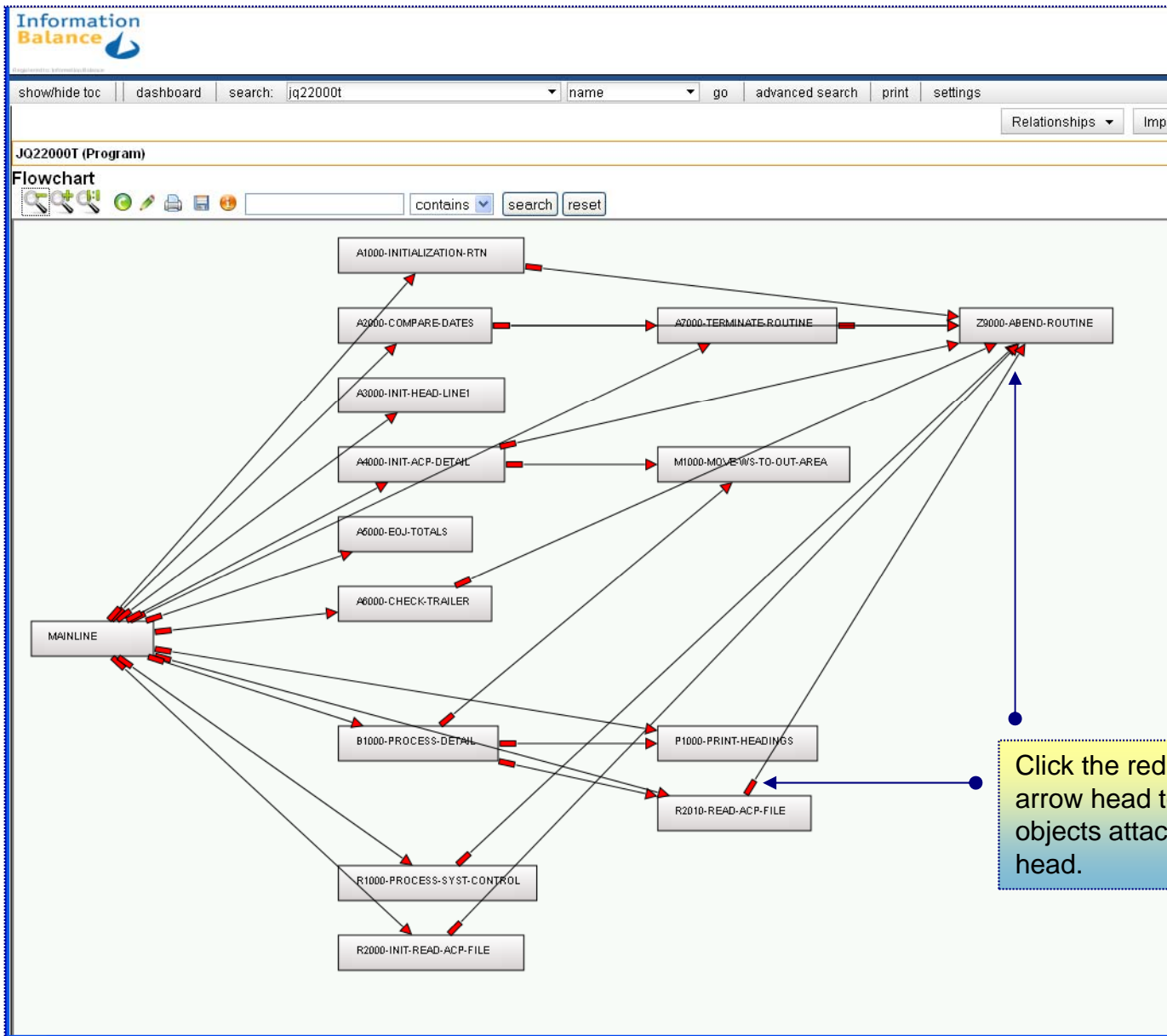


Diagrams can be **searched** by entering search criteria at the top of the window and clicking the search button.

Search results are highlighted in yellow

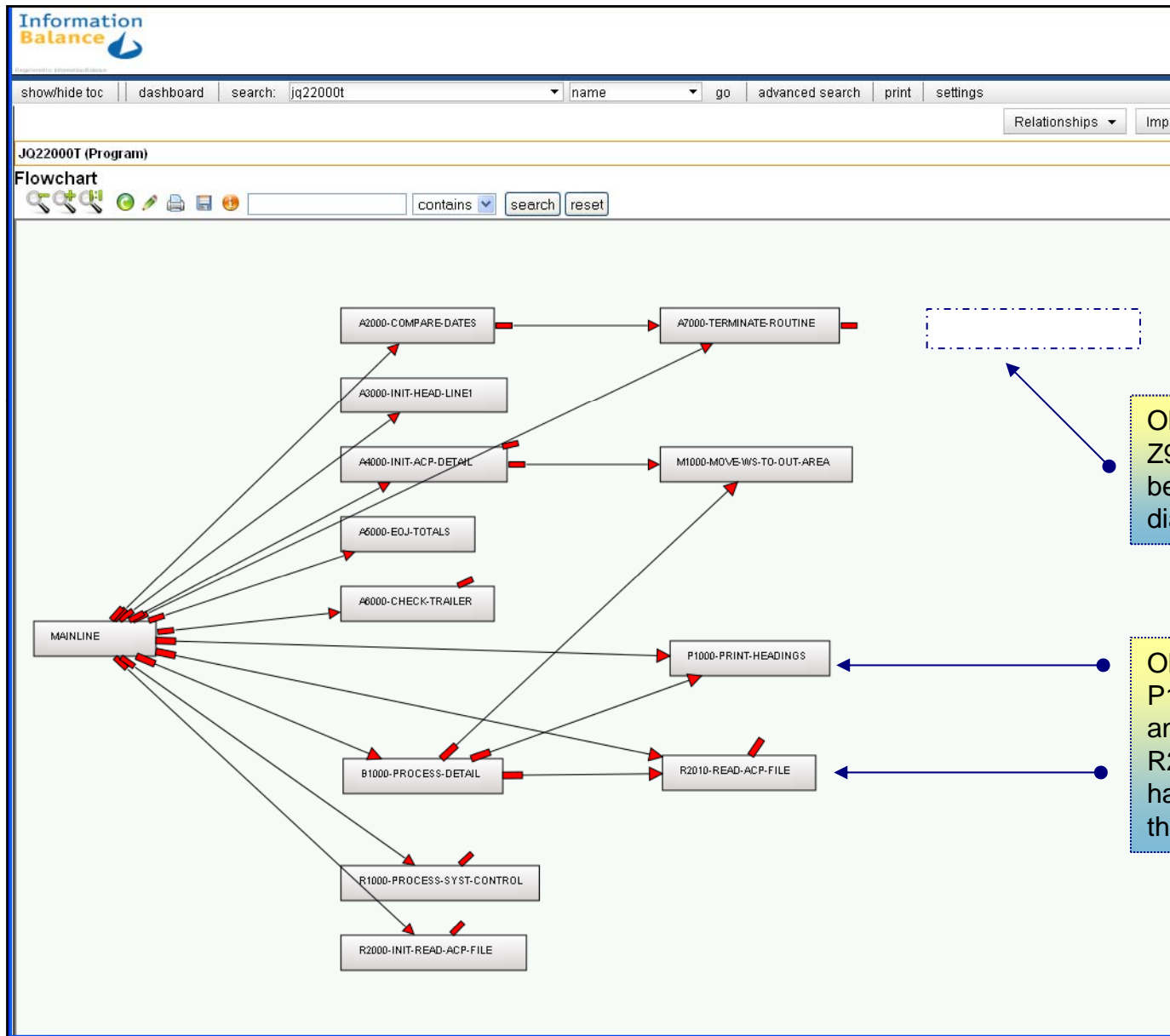


ARM prints diagram in Adobe PDF format. The dialog box – opened when the user clicks the **Print** icon – allows the user to select and print the diagram. Print options are controlled from a drop-down in the diagram menu.



Large and/or complex diagrams may be re-organized to focus on a particular subset of the diagram. Diagram objects – a single box or an entire branch - can be easily hidden or moved around.

Click the red rectangle or the arrow head to remove the link and objects attached to the arrow head.



Object Z900-ABEND-ROUTINE has been **removed** from the diagram.

Objects P1000-PRINT-HEADINGS and R2010-READ-ACP-FILE have been **repositioned** in the diagram.